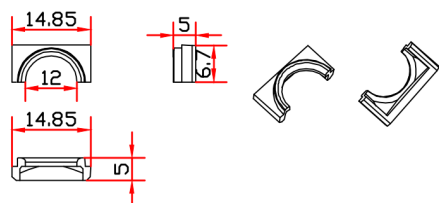
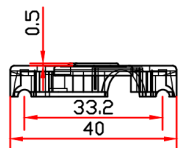
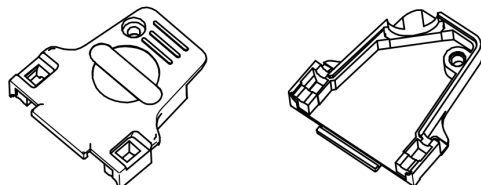
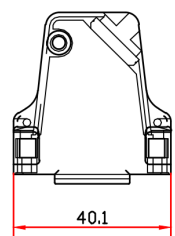
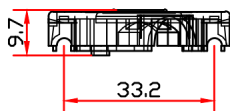
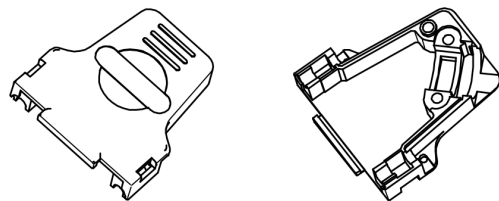
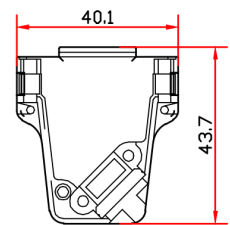
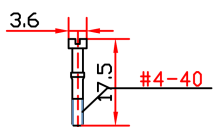
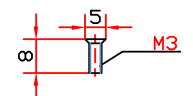
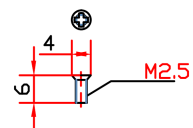


REV.	ECN. NO.	APPD.
A	WL-20-008	Jerry. Zhang

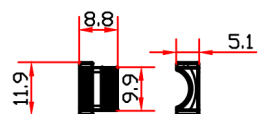


Cable Reduction Plate

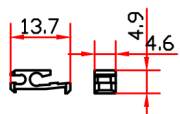


装配 (附件如下)

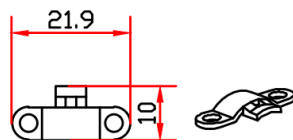
项目	名称	数量	材质
1	Hoods(Lid and base)	2PCS	Zinc Alloy
2	Screws For Hood	1PCS	Iron
3	Screw For Clamp	2PCS	Iron
4	Locking Screw	2PCS	Iron
5	Cable Clamp	2PCS	Zinc Alloy
6	Strain Relief	1PCS	Zinc Alloy
7	Catch Spring(Right and Left)	2PCS	ABS
8	Rubber Bushing	1PCS	PVC
9	Cable Reduction Plate	2PCS	Zinc Alloy



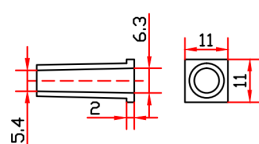
Strain Relief



Catch Spring(Right and Left)



Cable Clamp



Rubber Bushing

X.±	X.±	UNITS	mm	NAME(INTENDED USE) D-Sub 15Pin 45度金属壳 短螺杆	
.X± 0.3	.X'±	MAT'L			
.XX± 0.20	.XX'±	SEE NOTES		PART NO.(INTENDED USE) WL23-5701	CLASS: <input type="checkbox"/> CONFIDENTIAL <input type="checkbox"/> SECRET <input checked="" type="checkbox"/> GENERAL
.XXX±	.XXX'±	FINISH		APPD: yuan. wu 08/16~20	TITLE: CONN DRAWING
THESE DRAWINGS AND SPECIFICATIONS ARE THE PROPERTY OF INCEL INTERCONNECT TECHNOLOGY LIMITED, AND SHALL NOT BE REPRODUCED, COPIED OR USED IN ANY MANNER WITHOUT THE PRIOR WRITTEN CONSENT OF INCEL INTERCONNECT TECHNOLOGY LIMITED.				Q'TY	DWG NO.: WL23-5701-0014
				CHKD: lei. wang 08/16~20	SCALE
				DRAW: min. sun 08/16~20	SHEET
					REV.
					N/A 1/1 A